

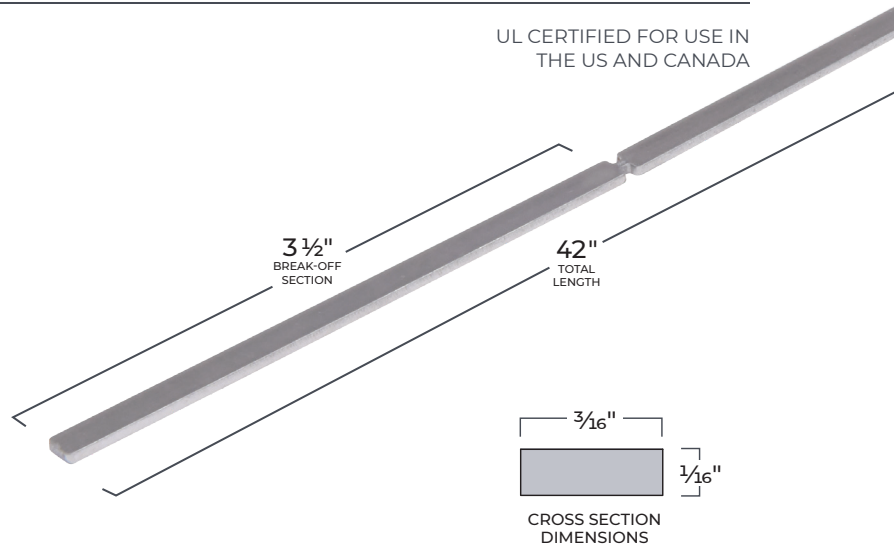
# STEEL HINGE SHIMS



UL CERTIFIED FOR USE IN THE US AND CANADA

## HS-1

- Use to Shim Hinges to Achieve Required Clearances Between Door and Frame
- Dual Purpose Shim
  - Use Full 42" Length for Continuous Hinges
  - Break-Off 3 1/2" Sections for Butt Hinges
- Steel Fire-Rated Shims
- Pressure Sensitive Adhesive Pads Included for Holding in Place During Installation
- Removable, Re-Stickable, and Stackable
- Available in Boxes of Ten



POSITIVE PRESSURE TESTED  
MISCELLANEOUS FIRE DOOR  
ACCESSORY

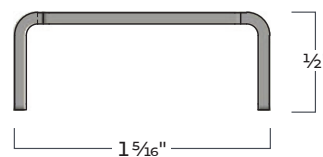
# 9945EC & 9945NEC

## END CAPS

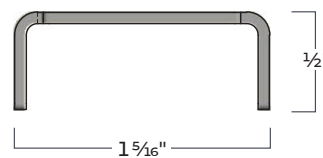
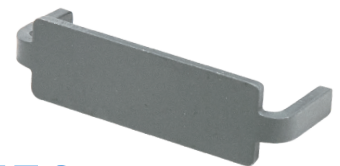
UL CERTIFIED FOR USE IN THE US AND CANADA

For Use on GAP90 and GAP90N Steel Stop Extender Components 9945 and 9945N.

- Use to Cap the Exposed Open End of the Steel Stop Extender When Cut at Rim Panic Strike or Other Hardware
- Sold in 10 Packs
- Sold Flat, Tabs Must be Formed Prior to Use



9945EC



9945NEC



POSITIVE PRESSURE TESTED  
MISCELLANEOUS FIRE DOOR  
ACCESSORY