



# SS302

## Full Surface Stainless Steel Continuous Hinge

### PRODUCT CUT SHEET

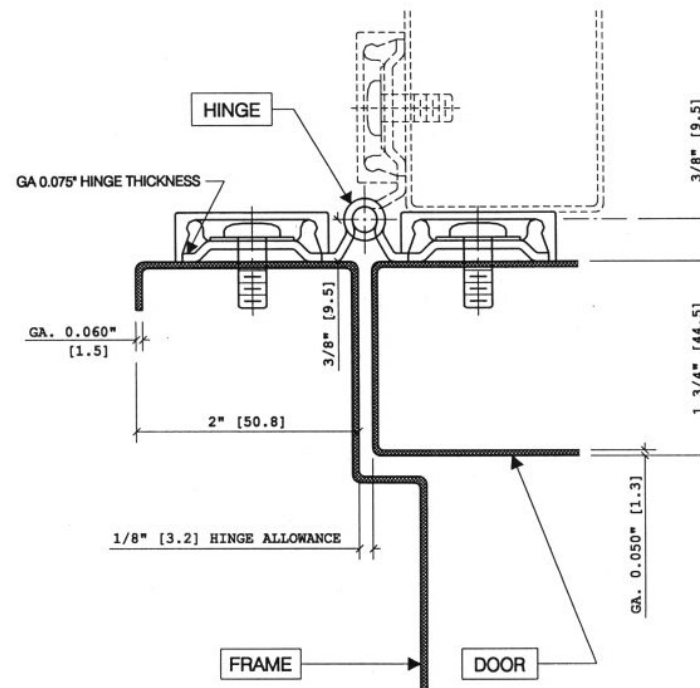
PROJECT:
SUBMITTED BY:
DATE:
NOTES:

- ▶ Heavy-Duty Type 304, 14-Gauge Stainless Steel
- ▶ Pin and Barrel Design
- ▶ Stainless Steel Hinge Pins
- ▶ Medical Type Self-Lubricating Flanged Bearings Between Each 2" Knuckle Provide Dust-Free Quiet and Smooth Operation
- ▶ For Doors Weighing up to 600 Lbs.
- ▶ 25-Year Warranty
- ▶ # $\frac{1}{4}$ -20 x  $\frac{3}{4}$ " TEK Screws for Metal Doors and Frames
- ▶ US32D (630) Brushed Finish
- ▶ Standard Lengths: 83", 85", 95", 119"

#### Options:

- ▶ Torx Security TEK Screws
- ▶ Thru-Bolts for 1 $\frac{3}{4}$ " Doors – Specify "SSH-TB"
- ▶ Cut To Net Length - Specify Door Handing
- ▶ Dutch Door Prep - Specify Door Handing, Bottom Door Leaf Length, and Clearance Between Leafs
- ▶ US32 (629) Polished Finish
- ▶ Welded Tips for Non-Rising Pins

#### FULL SURFACE (FLUSH)



Fire-rated 3 hours on hollow metal doors and 90 minute on wood doors. Maximum size 4'0" x 10'0".



ANSI/BHMA Certified to A156.26 American National Standard for Continuous Hinges: Grade 1 - 150 lb. Door

Note: For Door Sizing Refer to Installation Instruction.

NGP-CHG-SS302-PCS-1220-A