



Stainless Steel Continuous Hinge Concealed, up to 1/8" Inset, for 1-3/4" Doors SS300

Material

- Heavy duty 14 gauge type 304 stainless steel
- Pin and barrel design
- Stainless steel hinge pins
- Medical type self-lubricating flanged bearings between each 2" knuckle provide dust-free quiet and smooth operation
- For doors weighing up to 600 lbs.
- 25 year warranty
- #10 x 1/2" TEK screws for metal doors and frames
- #10 x 1" wood screws for wood doors
- US32D (630) brushed finish
- Standard lengths: 83", 85", 95", 119"

Available Options:

- Torx security TEK Screws
- Cut to net length
- Anti-ligature welded hospital tip - specify "ALHT"
- Dutch door prep - specify door handing, bottom door leaf length, and clearance between leaves
- Electric thru wire ETW8
- Electric power transfer prep
- US32 (629) polished finish
- Welded tips for non-rising pins



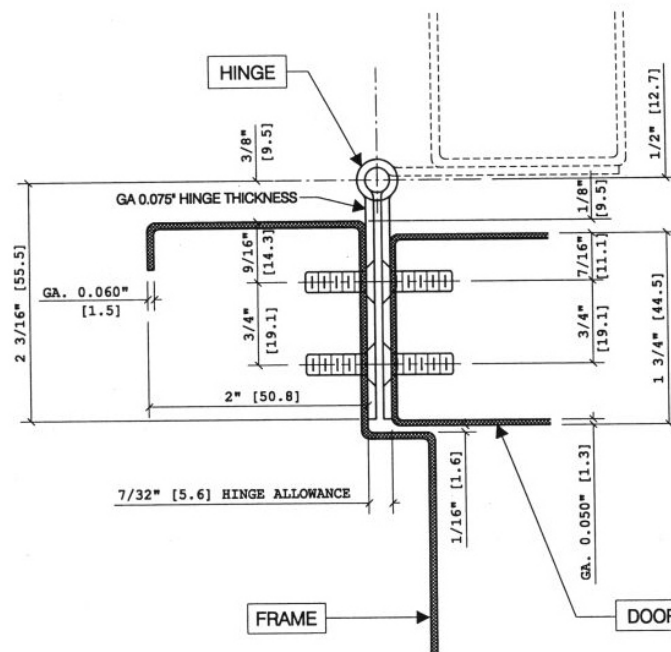
Fire-rated 3 hours on hollow metal doors and 90 minute on wood doors. Maximum size 4'0" x 10'0".



ANSI/BHMA certified to A156.26 American National Standard for Continuous Hinges: Grade 1 - 150 lb. door

Project:
Submitted by:
Date:
Notes:

FULL MORTISE (EDGE MOUNT)



Note: For Door Sizing Refer to Installation Instruction.