

POCKET FRAME KIT UP TO 9/0 DOORS



TOP MOUNT TRACK SYSTEM

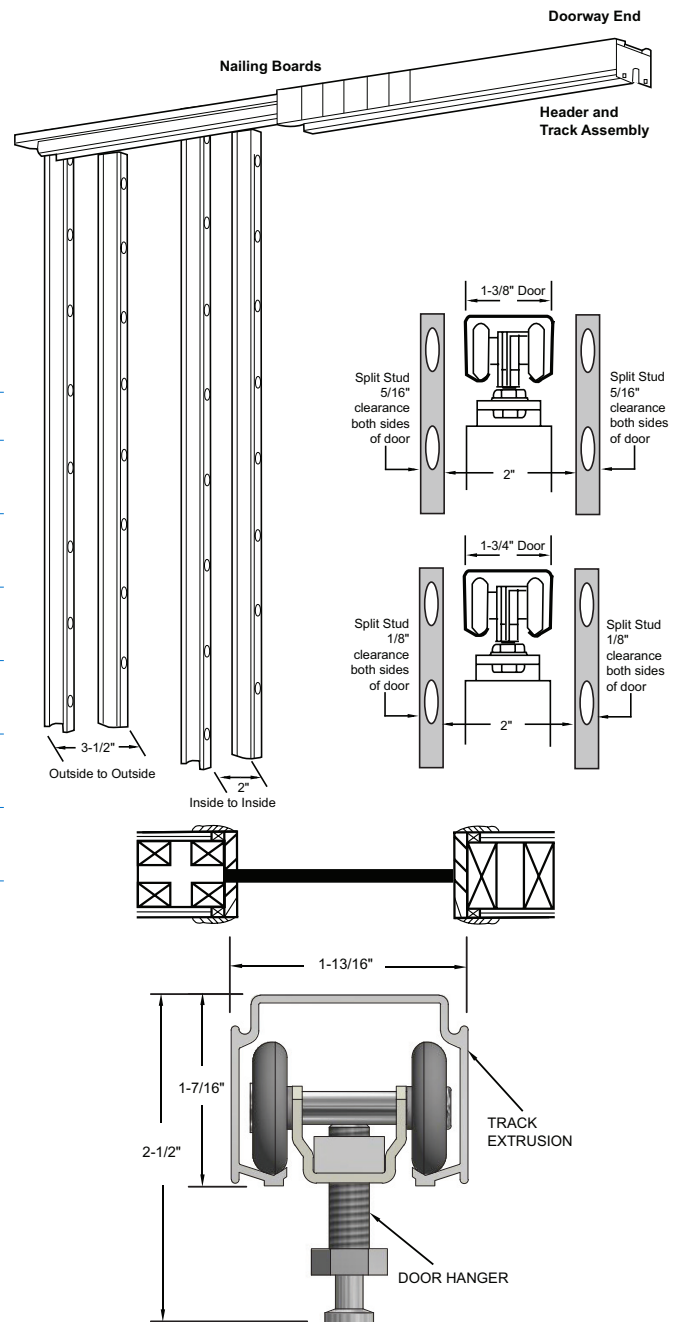
- Commercial Grade for 1 $\frac{3}{8}$ " To 1 $\frac{3}{4}$ " Doors
- For Sliding Doors up to 250 lbs. Each
- ANSI/BHMA A156.14 Grade 1 Certified to 100,000 Cycles Including Soft-Close Feature
- Hangers With Heavy-Duty Ball Bearing Wheels
- Meets ADA Push Force Requirements
- 5-Year Warranty
- Patent Pending

SKU	APPLICATION	FOR UP TO:
SLAL-250-PDKIT-EXT	4" Wood or Metal Stud	3/0 x 9/0
SLAL-250-PDKT-EXT-48	4" Wood or Metal Stud	4/0 x 9/0
SLAL-250-PDKIT-6-EXT	6" Wood Stud (5 $\frac{1}{2}$ " Header)	3/0 x 9/0
SLAL-250-PDK-6-EXT48"	6" Wood Stud (5 $\frac{1}{2}$ " Header)	4/0 x 9/0
SLAL-250-PDKT-6M-EXT	6" Metal Stud (6" Header)	3/0 x 9/0
SLAL-250-PK-6M-EXT48	6" Metal Stud (6" Header)	4/0 x 9/0

Order Two Sets for Bi-Parting Applications

Complete Kits Include:

- (1) Header Track Assembly
- (1) Universal Hardware Pack, Consists Of:
 - (2) Ball Bearing Heavy-Duty Hangers
 - (2) Snap-In Door Brackets
 - (2) In-Track Stops
 - (1) Angle Stop
 - (1) Bumper Stop
 - (1) Door Guide
 - (1) 1 $\frac{3}{4}$ " Thick Door Adaptor Kit Included in 2x4 Stud Wall Kits
- (1) Pocket Frame Kit
 - Jamb Stiffeners
 - (4) 36" Openings
 - (6) 48" Openings
 - (4) Jamb Stiffener Extensions
 - (4) Jamb Splice Brackets
 - Floor Brackets
 - (2) 36" Openings
 - (3) 48" Openings
 - (1) End Bracket



OPTIONS:

- Soft-Close / Open – Specify “SC”
For Both Directions Order “SCBY” for Doors 120 lbs.-150 lbs. Each
- Light-Duty Soft-Close / Open - Specify “SC-LITE”
For Both Directions Order “SCBY-LITE” for Doors 65 lbs.-115 lbs. Each
- Wall Mounted Bottom Guide “SL-WG”
- Bottom Channel Guide “SL-BCG” (Page SL17)
- Converging Kit Used to Join Headers in Bi-Parting Openings “SLAL-CNVG-KIT”