



SL-BLFT-CP

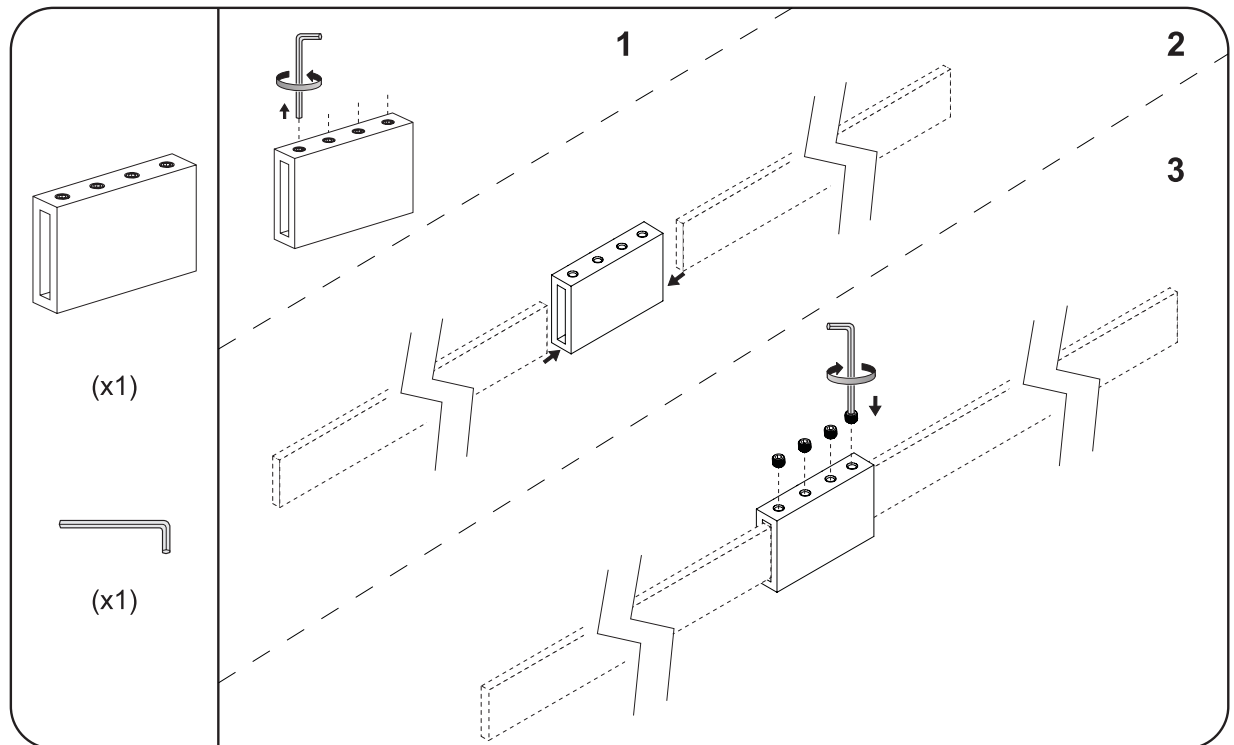
Black Powder Coated Finish Coupler for Flat Track

PRODUCT CUT SHEET

PROJECT:
SUBMITTED BY:
DATE:
NOTES:

Coupler

- Used to Join Two Black Flat Tracks Together
- Black Powder Coated Steel Finish



NGP-SLI-SL-BLFT-CP-PCS-0324-A

NATIONAL GUARD PRODUCTS, INC.

MEMPHIS

4985 East Raines Road
Memphis, TN 38118

CARSON CITY

3689 Arrowhead Drive
Carson City, NV 89706

Fax: (800) 255-7874

Email: info@ngp.com

Quotes: quotes@ngp.com

Orders: orders@ngp.com

ngp.com
1-800-NGP-RUSH