



# PLSL

## STORM PRO™ Inverted Split Y Security Door Louver

### PRODUCT CUT SHEET

|               |
|---------------|
| PROJECT:      |
| SUBMITTED BY: |
| DATE:         |
| NOTES:        |

#### For 1 3/8" to 1 3/4" Thick Doors

- ▶ 12 Ga. Cold Rolled Steel Security Grille Frame with 13/16" square holes on 1" centers
- ▶ 20 Ga. Cold Rolled Steel Louver Blades
- ▶ Countersunk Mounting Screw-Holes
- ▶ #8-32 Phillips Head Screw Thru-Bolts
- ▶ Available in Uneven and Fractional Sizes
- ▶ Free Area 50%
- ▶ Gray Primer (GPZ) Powder Coat Finish

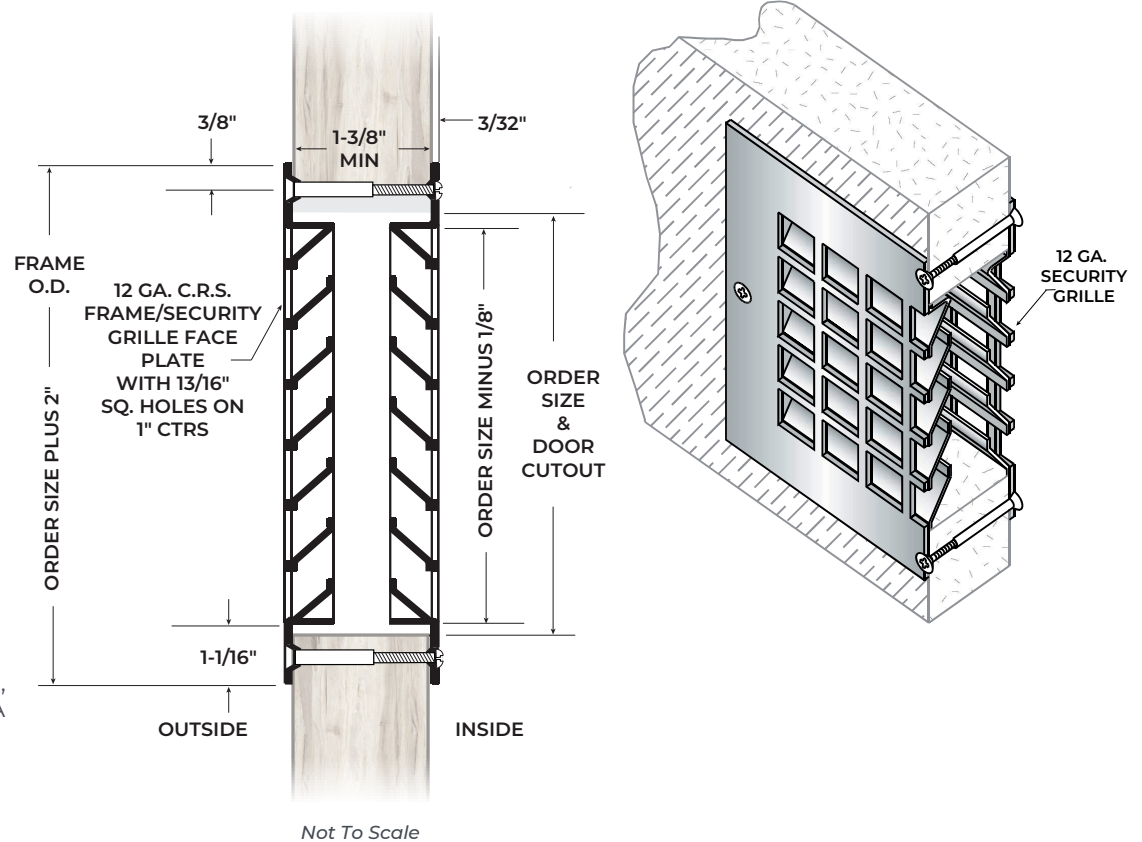
#### Available Options

- ▶ Powder Coat Color Options - See Color Chart on [ngp.com](http://ngp.com)
- ▶ Aluminum Insect Screen - 22 Ga. 1/8" Square Mesh Installed on Exterior Side Unless Requested Otherwise
- ▶ #8-32 Torx Security Pin Screw Thru-Bolts
- ▶ Electrogalvanized Steel (Not Available on Security Grilles)
- ▶ Zinc Electroplating (Not Available on Insect Screen)
- ▶ Type 316 Stainless Steel - Specify PLSL-316SS, Stock Sizes: 12" x 12" 18" x 12" 18" x 18" 24" x 12" 24" x 18" 24" x 24"

#### Windstorm Rated

- ▶ Light Kit for Use in Windstorm-rated Assembly in accordance with ANSI/ASTM E330, ANSI/ASTM E1886, ASTM E1996, AAMA/WDMA/CSA 101/I.S.2/A440, FEMA 320, FEMA 361 and ICC 500. Design Pressure = +/- 70 PSF Large Missile Impact = 350 ft. lbs. Hazard - Hurricane

This Product is **NOT** Rated for Use on Fire-Rated Doors



#### NATIONAL GUARD PRODUCTS, INC.

##### MEMPHIS

4985 East Raines Road  
Memphis, TN 38118

##### CARSON CITY

3689 Arrowhead Drive  
Carson City, NV 89706

Fax: (800) 255-7874  
Email: [info@ngp.com](mailto:info@ngp.com)

Quotes: [quotes@ngp.com](mailto:quotes@ngp.com)  
Orders: [orders@ngp.com](mailto:orders@ngp.com)

[ngp.com](http://ngp.com)  
1-800-NGP-RUSH

NGP-LIT-PLSL-PCS-0124-A