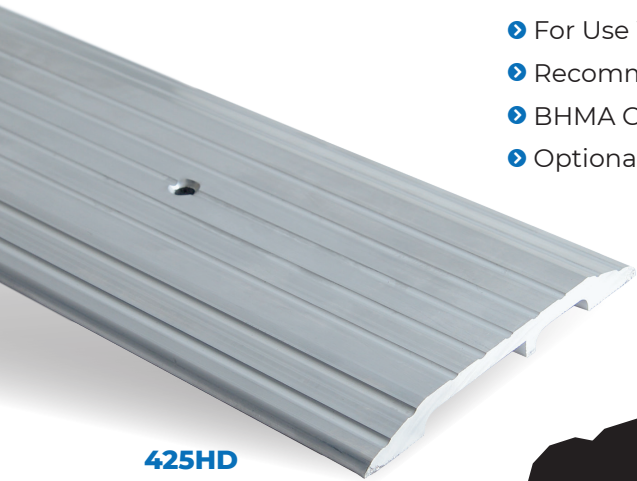


HEAVY-DUTY THRESHOLDS

All Products On This Page

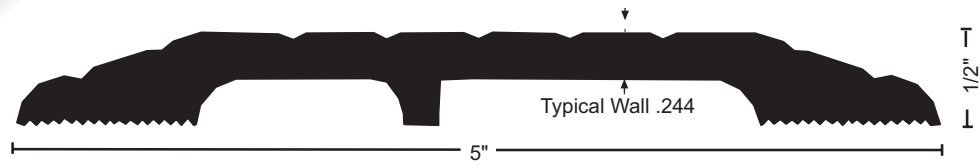


- ▶ For Use Where Forklift or Vehicular Traffic Occurs
- ▶ Recommended for Delivery/Storage Doorways Where Heavier Loads Travel
- ▶ BHMA Certified To ANSI A156.21 Heavy-Duty 10,000 Lb. Load Test
- ▶ Optional SIA Slip-Resistant Finish Recommended in Moisture Prone Areas



425HD

ADA Compliant
EXTRA Heavy-Duty Aluminum
Threshold, 1/2" x 5"



425HD 1.6 lbs./ft.
425HDDBK 1.6 lbs./ft.



513HD 1.4 lbs./ft.
513HDDBK 1.4 lbs./ft.



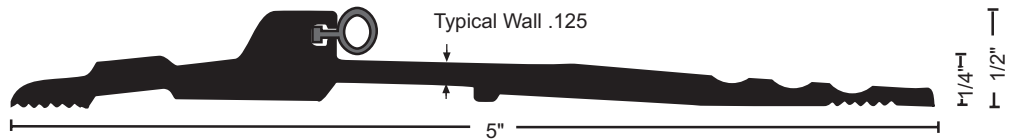
BUMPER SEAL

Seals Against the Door to
Provide Weather Resistance

BUMPER SEAL OPTIONS

- V** Vinyl**
- N** NGP-TPV
- S** Silicone

**Vinyl ("V") Supplied Unless Other
Material Specified



896HD 1.01 lbs./ft.
896HDDBK 1.01 lbs./ft.



* When Installed With the
Non-Beveled Edge Flush
With Flooring, or Where
No Greater Than 1/4"
Vertical Rise Occurs



325HD 1.65 lbs./ft.
325HDDBK 1.65 lbs./ft.

MATERIALS & FINISHES

- Mill Aluminum
- DKB - Aluminum Dark Bronze



OPTIONAL SIA SLIP-RESISTANT FINISH

For Use in Areas Where
Conditions Can Be
Hazardous and Safety Is
a Priority.

FASTENERS

- #10 x 1-1/2" FH Zinc-Plated
Wood Screws Furnished. Dark
Bronze Supplied With DKB.