



NATIONAL GUARD
PRODUCTS

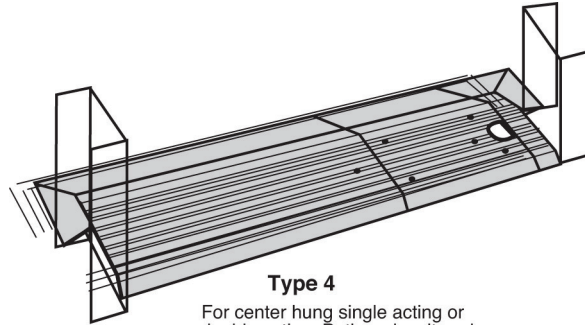
Floor Closer Threshold 4X813BR



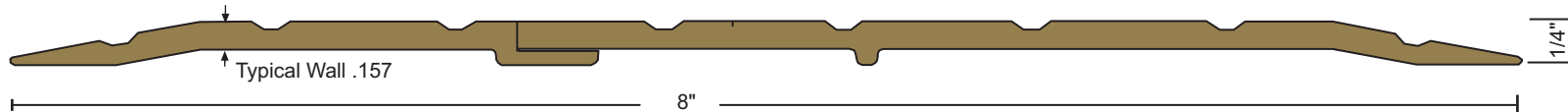
Materials & Finishes

Alloy CDA 385 (Copper Alloy No. C38500),
Architectural Bronze satin finish (728) similar
to US4

- 8" width x 1/4" tall
- Fluted top
- Thresholds can be fabricated for use with any floor closer
- BHMA certified to ANSI/BHMA A156.21 1,000 lb. load test
- Typical wall thickness .157"
- Weight: 4.60 lbs./ft.
- #10 X 1-1/2" brass wood screws included
- Antique bronze finish screws provided with dark bronze threshold



Type 4
For center hung single acting or double acting. Both ends mitered.



Options:

- Optional Slip Resistant SIA Finish

Optional finishes: Polished (721),
suffix "POL"

Dark oxidized oil rubbed (722) similar
to US10B, suffix "DKB"

Project:

Submitted by:

Date:

Notes: