



NATIONAL GUARD
PRODUCTS

Floor Closer Threshold 4X713BR



Materials & Finishes

Alloy CDA 385 (Copper Alloy No. C38500),
Architectural Bronze satin finish (728) similar
to US4

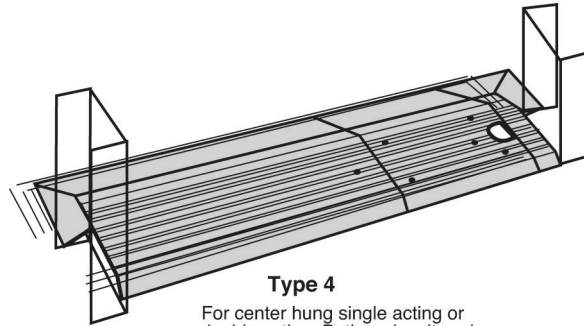
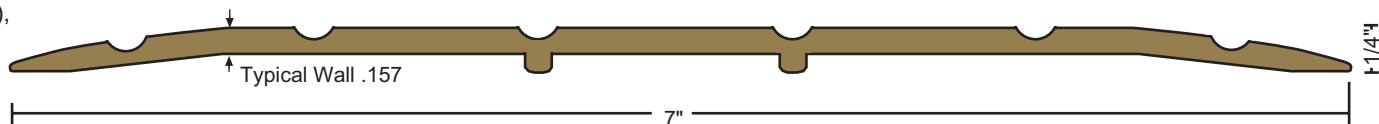
- 7" width x 1/4" tall
- Fluted top
- Thresholds can be fabricated for use
with any floor closer
- BHMA certified to ANSI/BHMA A156.21
1,000 lb. load test
- Typical wall thickness .157"
- Weight: 3.62 lbs./ft.
- #10 X 1-1/2" brass wood screws included.
Antique bronze finish screws provided
with dark bronze threshold

Options:

- Optional Slip Resistant
SIA Finish

Optional finishes: Polished (721),
suffix "POL"

Dark oxidized oil rubbed (722)
similar to US10B, suffix "DKB"



Project:
Submitted by:
Date:
Notes: