



NATIONAL GUARD
PRODUCTS

Heavy Duty Surface Automatic Door Bottom

420N Neoprene  STC 44



Material

Aluminum alloy 6063, T5 temper
Synthetic rubber polymer blend: PVC, Nitrile rubber (NBR),
and Chloroprene closed cell advanced elastomeric foam
Neoprene is black

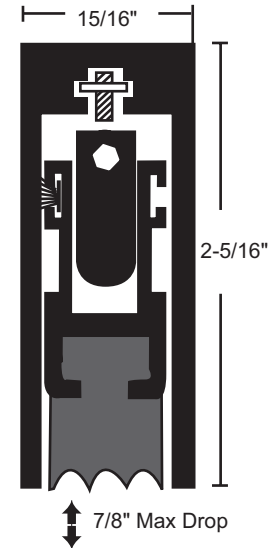
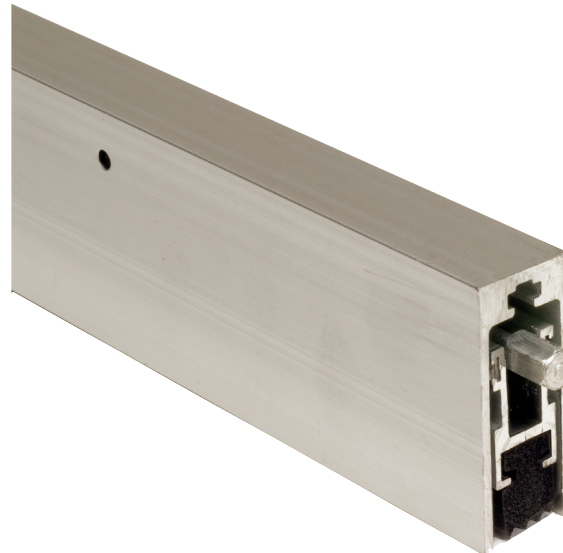
- BHMA certified to ANSI/BHMA A156.22, 1,000,000 cycle test-grade 1
- BHMA certified to ANSI/BHMA A156.22 performance tests for heat and cold
- Very good abrasion resistance, tensile strength and memory
- Flame resistant
- Moisture resistant
- Temperature range -20°F to 200°F
- Good resistance to ozone, sunlight and aging
- Mounts on push side of door
- Use with a threshold for maximum sealing capability
- Nylon brush recommended for carpet applications where no threshold is provided
- Specify exact net length required to avoid field sizing
- 36" and longer may be cut up to 4" in the field, under 36" should not be cut in the field, order net length
- Minimum length 11", maximum length 60"
- End caps furnished standard
- For half mortise applications specify HM in item number prior to finish (ie: 420NHMDKB)
- 7/8" max drop

Finishes

420NA	Anodized Aluminum
420NB	Gold
420NDKB	Dark Bronze

Options

Lead insert available for radiation shield - specify "lead-lined"



Project:

Submitted by:

Date:

Notes: