




Carpet and Tile Divider 414

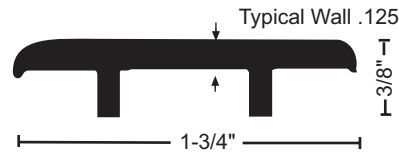
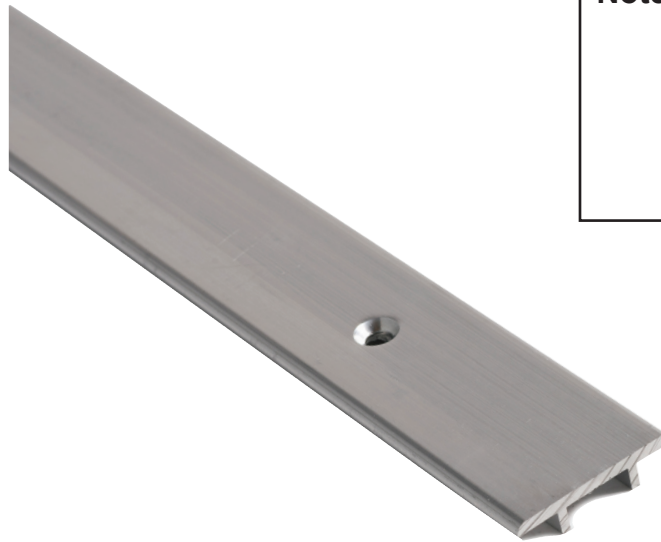


Materials & Finishes

Aluminum alloy 6063, T5 temper
Mill finish
DKB - dark bronze finish

- 1-3/4" wide x 3/8" tall
- Smooth top
- BHMA certified to ANSI/BHMA A156.21 1,000 lb. load test
- Typical wall thickness .125"
- Weight: .31 lbs./ft.
- #10 x 1-1/2" FH zinc plated wood screws included. Dark bronze supplied with DKB thresholds

 Optional Slip Resistant SIA Finish



| |
|----------------------|
| Project: |
| Submitted by: |
| Date: |
| Notes: |