



# 411

## Smooth Surface Threshold

### PRODUCT CUT SHEET

PROJECT:
SUBMITTED BY:
DATE:
NOTES:

#### Material and Features

Aluminum Alloy 6063, T5 Temper

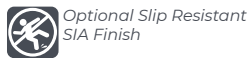
- ▶ 3" Wide x ¼" Tall
- ▶ Smooth Top
- ▶ BHMA Certified to ANSI/BHMA A156.21 1,000 Lb. Load Test
- ▶ Recommended to Provide the Best Results Where Automatic Door Bottoms are Used
- ▶ Typical Wall Thickness: .125"
- ▶ Weight: .50 Lbs./Ft.
- ▶ #10 x 1½" FH Zinc Plated Wood Screws Included

#### Finishes

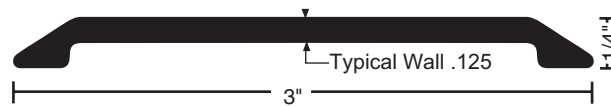
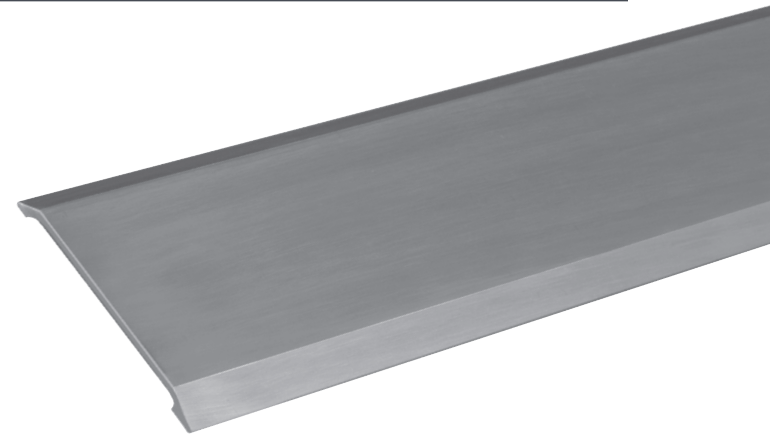
Mill Finish

DKB - Dark Bronze Finish

#### Options



Optional Slip Resistant  
SIA Finish



NGP-THR-411-PCS-1023-A

#### NATIONAL GUARD PRODUCTS, INC.

##### MEMPHIS

4985 East Raines Road  
Memphis, TN 38118

##### CARSON CITY

3689 Arrowhead Drive  
Carson City, NV 89706

**Fax:** (800) 255-7874

**Email:** info@ngp.com

**Quotes:** quotes@ngp.com

**Orders:** orders@ngp.com

**ngp.com**  
1-800-NGP-RUSH