

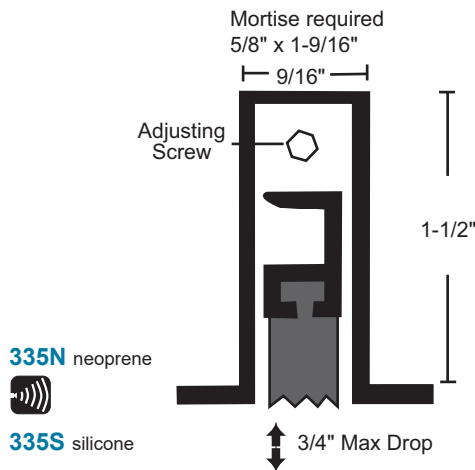
## Automatic Door Bottoms - Mortise

- Use with a threshold for maximum sealing capability
- Nylon brush recommended for carpet applications where no threshold is provided
- Specify exact net length required to avoid field sizing
- 36" and longer may be cut up to 4" in the field, under 36" should not be cut in the field, order net length
- End caps furnished standard
- Furnished 1/2" shorter than ordered to fit within net door size. (i.e. 36" is furnished 35-1/2").

All products this page



neoprene & NGP-TPV are black  
silicone, nylon brush & vinyl are gray



**335N** neoprene



**335S** silicone

**225N** neoprene (1)



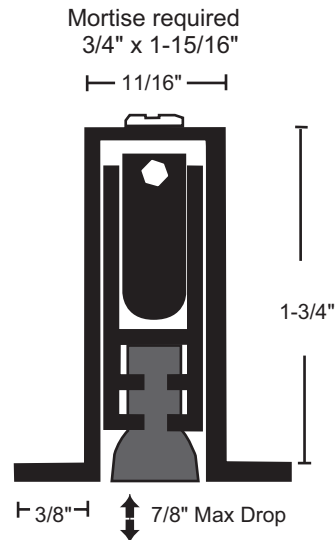
BHMA certified to  
ANSI/BHMA A156.22,  
1,000,000 cycle test-grade 1

**225S** silicone



BHMA certified to  
ANSI/BHMA A156.22,  
1,000,000 cycle test-grade 1

**225WH** nylon brush

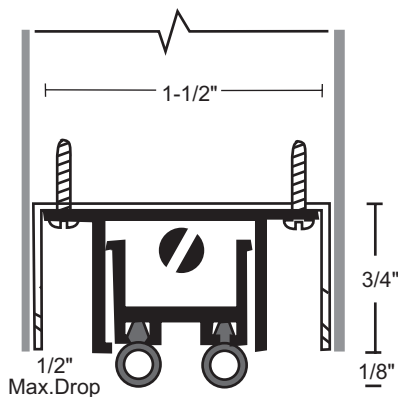


Available 23-1/4" net to 48" in length  
Fits wood fire door mortise restrictions

Available 11" to 60" in length

Available with lead insert for radiation shield - specify "lead-lined"

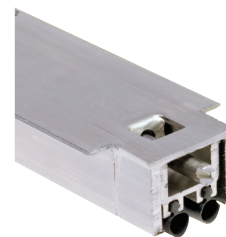
## Hollow Metal Doors



**320N** NGP-TPV

**320S** silicone

**320V** vinyl



Fits in 1-5/8" x 3/4" channel. A "furring strip" may be used to lower automatic door bottom when a deeper channel is used.

Furnished 1/2" shorter than ordered to fit within net door size. (i.e. 36" is furnished 35-1/2") Length may be field cut up to 4".

Fire ratings apply to metal doors only.

#4 x 5/8" SMS furnished. End caps not available.

Available 24" to 48" in length