



# 1X1013

Floor Closer Threshold

## PRODUCT CUT SHEET

PROJECT:
SUBMITTED BY:
DATE:
NOTES:

### Material

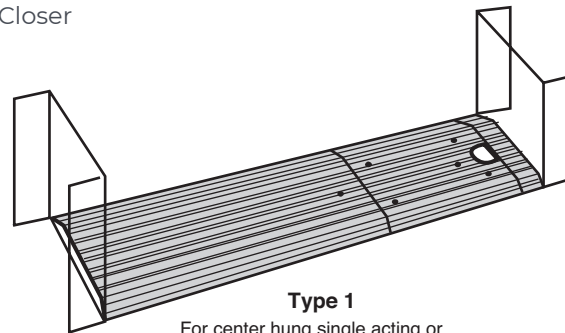
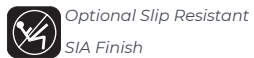
Aluminum Alloy 6063, T5 Temper

- ▶ 10" Wide x ¼" Tall
- ▶ Fluted Top
- ▶ BHMA Certified to ANSI/BHMA A156.21 1,000 Lb. Load Test
- ▶ Thresholds Can Be Fabricated For Use With Any Floor Closer
- ▶ Typical Wall Thickness: .125"
- ▶ Weight: 1.63 Lbs./Ft.
- ▶ #10 x 1 ½" FH Zinc Plated Wood Screws Included.  
Dark Bronze Supplied With DKB Thresholds

### Finishes

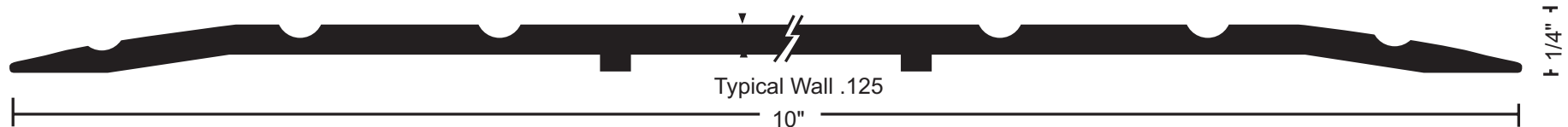
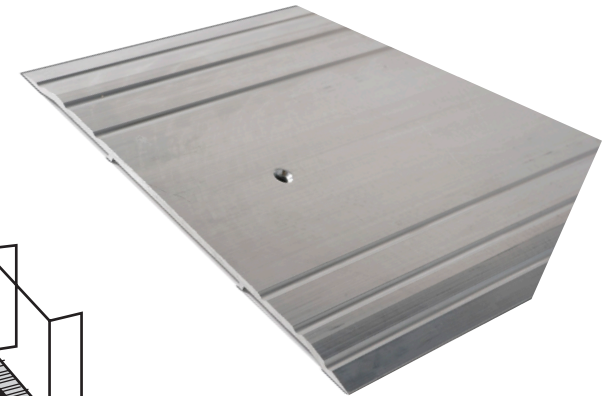
Mill Finish

DKB - Dark Bronze Finish



**Type 1**

For center hung single acting or double acting. Ends not mitered.



NGP-THR-1X1013-PCS-0321-A